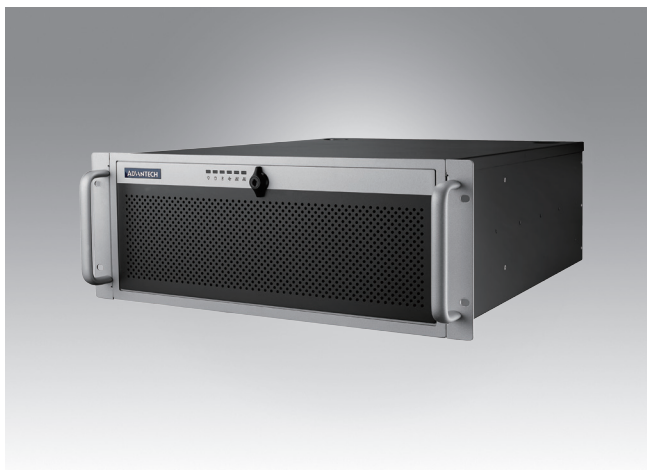


HPC-7442

4U Rackmount Chassis for Full-size SHB/SBC or EATX/ATX/MicroATX Motherboard with 4 Hot Swap Drive Trays



Features

- Support a PICMG backplane with up to 14 slots or an EATX/ATX/MicroATX motherboard
- Shock-resistant disk drive bay provides four hot-swap 3.5" or 2.5" SAS/SATA disk trays, one slim optical disk drive, and one 3.5" internal drive
- With optional storage upgrade kit installed, system equipped up to eight hot-swap HDD trays for higher storage capacity requirement (EATX/ATX/MicroATX motherboard version only)
- Supports 80plus single and redundant power supply
- Front-accessible system fan without opening top cover for easy maintenance (EATX/ATX/MicroATX motherboard version only)
- LED indicators and alarm notification for system fault detection
- Built-in Intelligent System Module enabling whole system fan control and remote manageability

Quiet

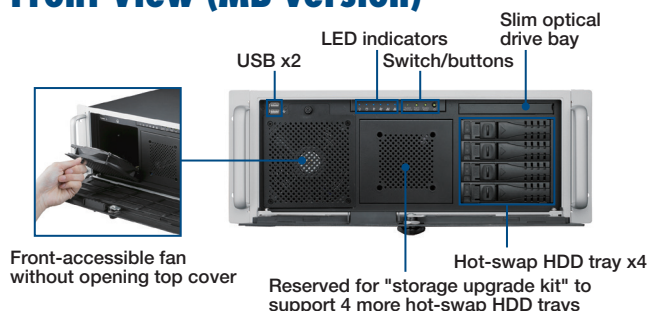
CE FCC

Specifications

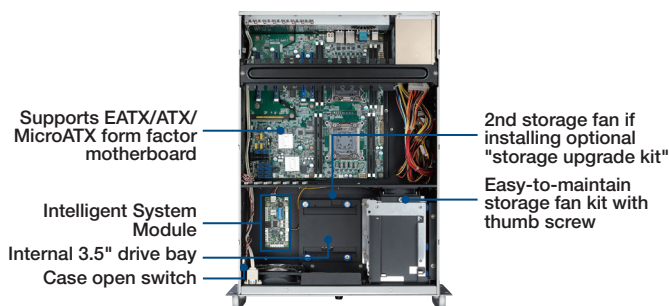
		External	Internal
Drive Bay	Slim Optical Drive	1	-
	3.5"	-	1
	Hot Swap	4 SAS/SATA HDDs (MB version support upgrade to 8)	
Cooling	Fan*	1 (12 cm /114 CFM) + 1 (8 cm/55 CFM)	
	Air Filter	Yes	
Front I/O Interface	USB 2.0	2	
Miscellaneous	LED Indicators	Power, HDD, temperature, fan, LAN1, and LAN2	
	Rear Panel	Five 9-pin D-Sub and one 68-pin SCSI openings	
Intelligent System Module Remote Monitoring	CPU/System fan speed, CPU/System temperature, motherboard voltage (Only selected Advantech MBs/CPU cards with SUSIAccess installed can fully enabled these functions, check with Advantech local rep. for detailed information.)		
Environment	Temperature	Operating 0 ~ 40° C (32 ~ 104° F)	Non-Operating -40 ~ 70° C (-40 ~ 156° F)
	Humidity	10 ~ 95% @ 40° C, non-condensing	10 ~ 95% @ 60° C, non-condensing
	Vibration (5 ~ 500 Hz)	1 Grms	2 G
	Shock	10 G (with 11 ms duration, half sine wave)	
	Dimensions (W x H x D)	482 x 177 x 600 mm (19" x 7.0" x 23.6")	
Physical Characteristics	Weight	18.5 kg (40.68 lb)	

* While adding the optional "storage upgrade kit", the chassis will support four more front-accessible SAS/SATA drive trays and one more (8cm/55CFM) fan for SAS/SATA drives. (only for MB version)

Front View (MB version)



Inside View



Mother Board Version

Upgrade Feature

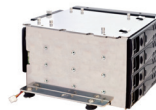


Enlarge venting area for optimized thermal capability (BP version)



HPC-7442 default SKU (supports 4 hot-swap HDD trays)

+



Storage upgrade kit (optional, 98R2744200E) (MB version)

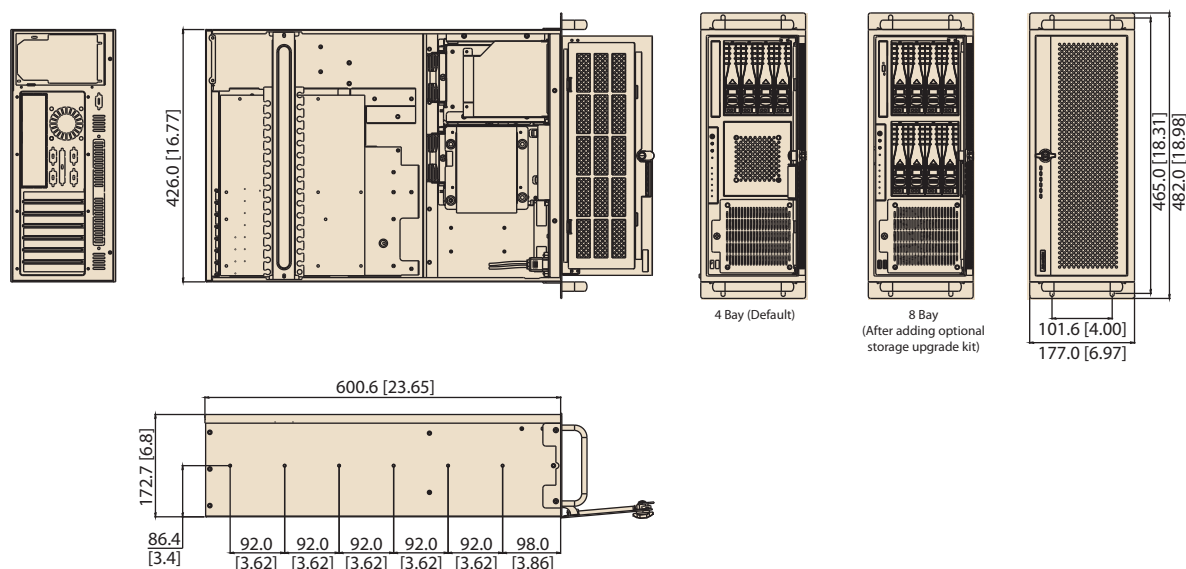
=



HPC-7442 8-bay SKU (supports 8 hot-swap HDD trays)

Dimensions

Unit: mm [inch]



Ordering Information

Part Number	Description
Motherboard Version	
HPC-7442MB-00XE	Without PSU, with ATX switch
Backplane Version	
HPC-7442BP-00XE	Without PSU, with ATX switch

Packing List

Part Number	Description
9662132020E	Black mobile HDD tray
1990021256T000	Door filter

Power Supply Options

Part Number	80 Plus Grade	Wattage	Type	Input
PS8-400ATX-ZE	Bronze	400W	Single	AC 100 ~ 240 V (full range)
PS8-500ATX-ZE	Bronze	500W	Single	AC 100 ~ 240 V (full range)
PS8-700ATX-ZE	Bronze	700W	Single	AC 100 ~ 240 V (full range)
RPS8-500ATX-XE	Bronze	500W	(1+1) Redundant	AC 100 ~ 240 V (full range)
RPS8-750ATX-XE	Gold	750W	(1+1) Redundant	AC 100 ~ 240 V (full range)

Optional Accessories

Part Number	Description
98R2744200E	Storage Upgrade Kit (only for MB version)
96CB-SATAPOWER-6P1	SATA power wire 6-pin to big 4-pin (for slim ODD)
989K008734	Internal 3.5" to two 2.5" HDD Frame